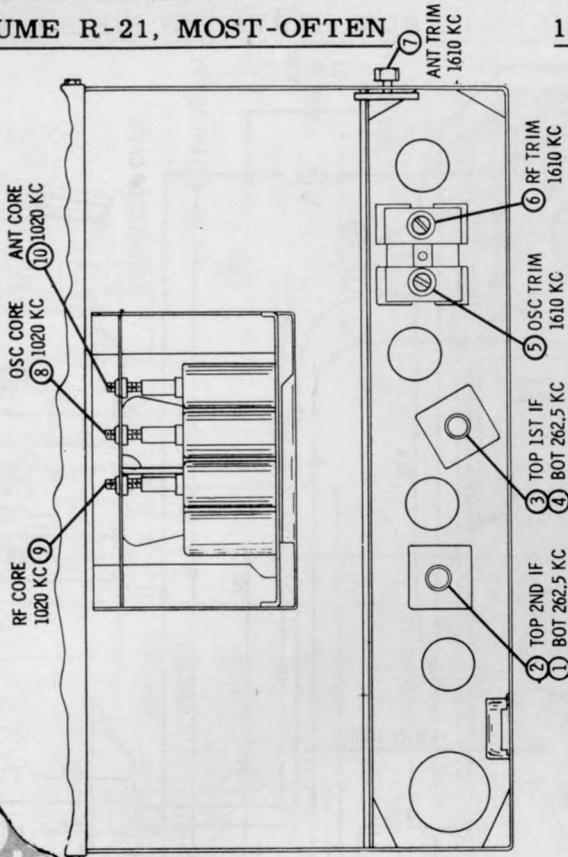


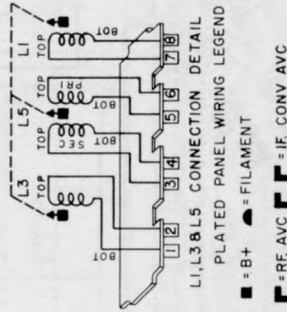
MOTOROLA Model 14MR
American Motors 8990833



ALIGNMENT POINTS LOCATION DETAIL

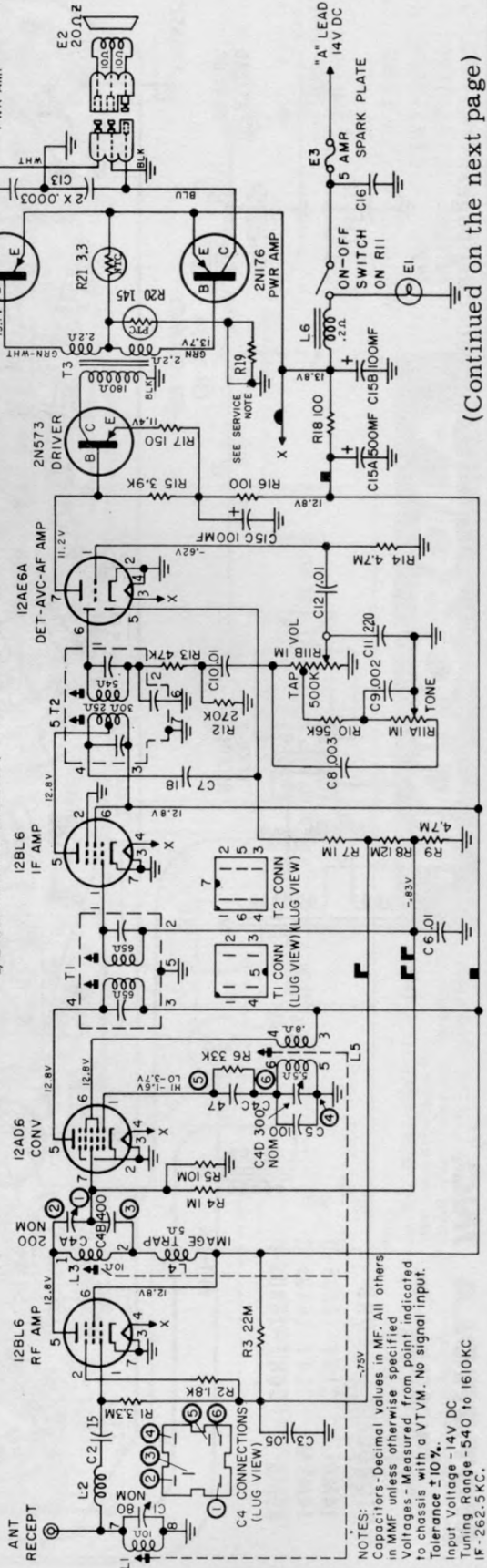
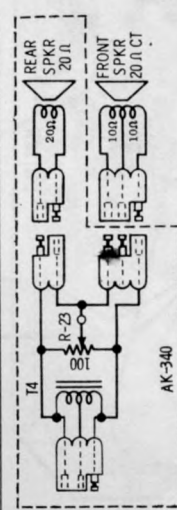
R19 is used to limit total collector current. In most sets it is a piece of copper wire; in a few sets it is a 1/2 watt carbon resistor, either 27 or 56 ohms.

PLATED CHASSIS BOARD GROUND CONNECTIONS AS SEEN THRU BOARD FROM WIRING SIDE



CAUTION

"A" LEAD MUST BE CONNECTED TO POSITIVE (+) SIDE OF POWER SUPPLY. RADIO WILL NOT OPERATE AND DAMAGE TO COMPONENTS WILL RESULT IF CONNECTED OTHERWISE



NOTES:

Capacitors - Decimal values in MF. All others in MMF unless otherwise specified

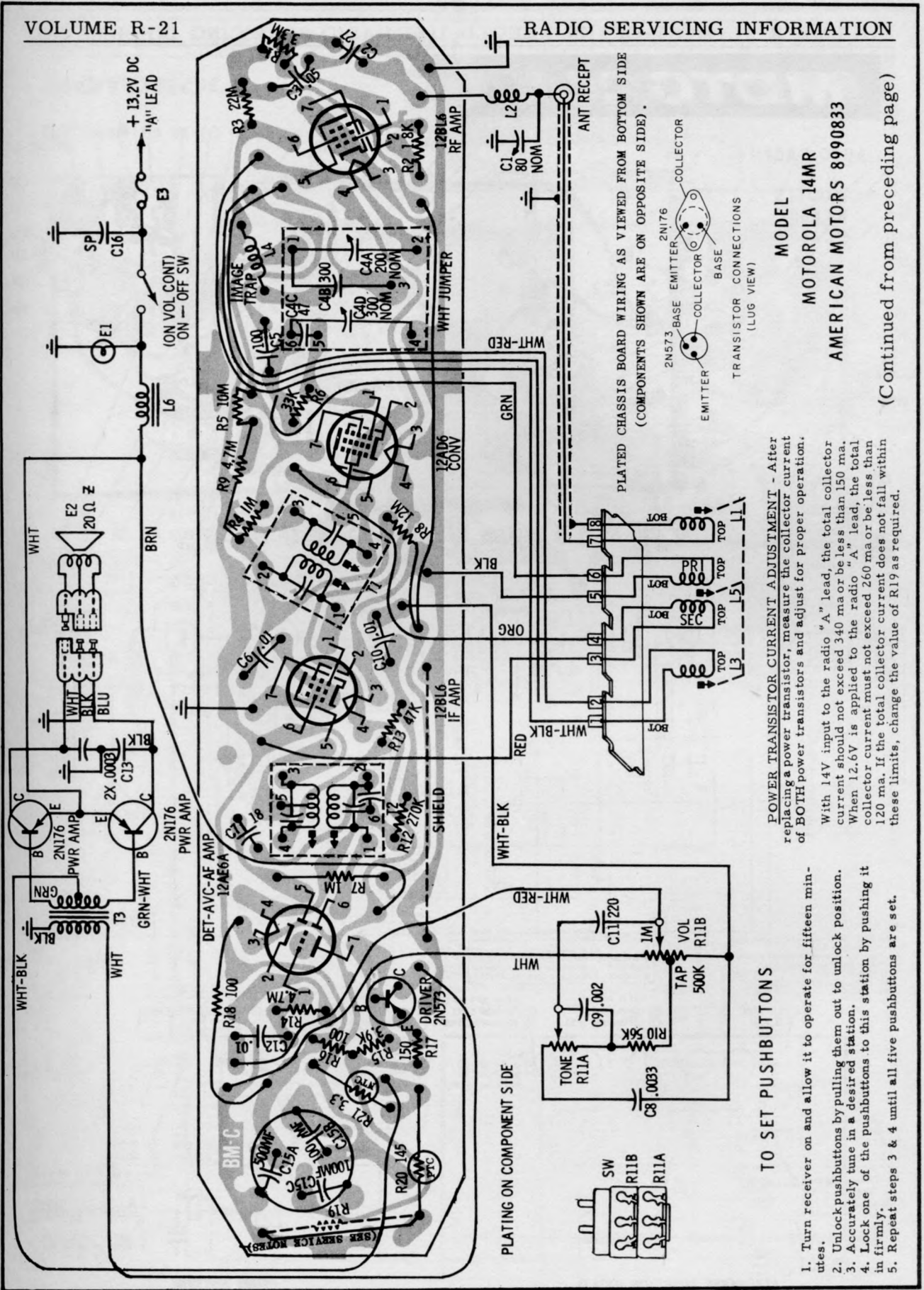
Voltages - Measured from point indicated to chassis with a VTVM. No signal input. Tolerance $\pm 10\%$.

Input Voltage - 114V DC

Tuning Range - 540 to 1610 KC

IF - 262.5 KC.

(Continued on the next page)



MODEL

MOTOROLA 14MR

AMERICAN MOTORS 8990833

(Continued from preceding page)

POWER TRANSISTOR CURRENT ADJUSTMENT - After replacing a power transistor, measure the collector current of BOTH power transistors and adjust for proper operation.

With 14V input to the radio "A" lead, the total collector current should not exceed 340 ma or be less than 150 ma. When 12.6V is applied to the radio "A" lead, the total collector current must not exceed 260 ma or be less than 120 ma. If the total collector current does not fall within these limits, change the value of R19 as required.

TO SET PUSHBUTTONS

1. Turn receiver on and allow it to operate for fifteen minutes.
2. Unlock pushbuttons by pulling them out to unlock position.
3. Accurately tune in a desired station.
4. Lock one of the pushbuttons to this station by pushing it in firmly.
5. Repeat steps 3 & 4 until all five pushbuttons are set.